

Premium Archwires

By the world's best premium archwire manufacturer



*"Have you ever wondered
how archwires are made?"*

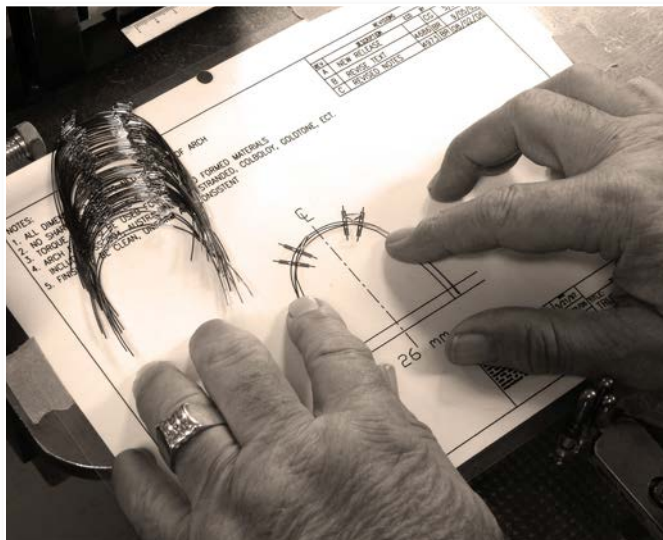
G&H employee, Arnold – As the third employee of the company, Arnold has ensured quality manufacturing for over 40 years.



ORTHODONTICS®
Quality Manufacturing. Exceptional Service.

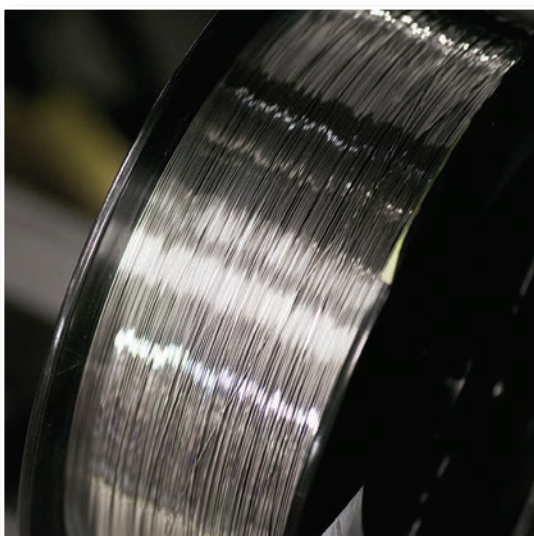


Dedication to quality manufacturing that began more than **40 years ago...**



Forty years ago, G&H Orthodontics began by creating archwire. Since then, G&H has grown into a full line orthodontic supplier – manufacturing not only wire, but brackets, bands, tubes, elastomers, and more – all made in the U.S.A. G&H prides itself on high-quality precision manufacturing, ensuring the finest products for optimal clinical results.

An archwire may be perceived by some to be a commodity item, however, G&H knows the integral role the archwire plays in achieving successful clinical outcomes. Every wire alloy demands specific processing techniques to fully express its consistent tooth-moving properties. There are many engineered processes that go into making G&H wires second to none in the industry.



Proprietary wire formulations with only the highest quality alloy materials ensure consistent quality.

STEP 1

Highest Quality Raw Material

Finished wire is only as good as the raw materials that are sourced.

Features

- Sourcing of the purest raw wire across all alloys
- Formulated to our proprietary specifications

Benefits

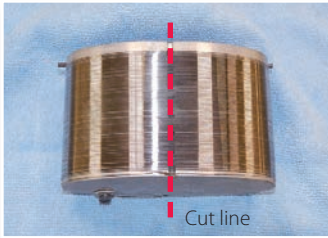
- Consistent, effective tooth-moving performance
- Highly resistant to breakage
- Decreased deformation



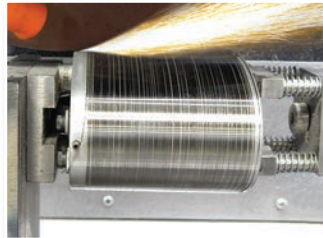
G&H employee, Jerome – Wire is wound onto precise forms of different sizes and shapes, then heat-treated.



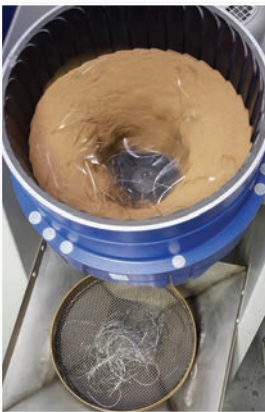
Heat-treatment sets the archform shape to wire.



After heat-treating, the wire around the form is cut across the middle on both sides of the form, creating individual archwires.



Wires are mechanically polished in a crushed walnut media with an abrasive polishing agent ensuring the best wire surface for optimal sliding mechanics during clinical treatment.



An ultrasonic, aqueous clean bath removes all soils and contaminants from wire.

STEP 2

Precision Wire Forming/Heating

Raw wire from the large spools is wound onto precise forms of different sizes and shapes that coordinate to the desired upper and lower archforms. These wire-wrapped forms are then heat-treated with our proprietary methods which sets the wire to the desired shape and establishes the properties of the wire. Additional heat-treatment processes are used for creating dimples, reverse curve, and posted wires.

Features

- Specialized forms set the archform shape
- Proprietary heat-treating and cooling process developed and perfected over decades
- Exact transformation temperature control

Benefits

- Consistent wire properties maintained during clinical treatment
 - Force values
 - Archform shape

STEP 3

Mechanical Wire Polishing

An essential process prior to final inspection.

Features

- Proprietary mechanical polishing techniques
- Aqueous clean bath

Benefits

- Clean, smooth wire, free of irregularities
- Reduced coefficient of friction for optimal tooth movement

Archwire Varieties for Every Alloy

Precision Manufactured in the U.S.A.

TOP SELLER!



M5™ THERMAL COPPER NICKEL TITANIUM

Available in:

- All Archforms
- Pre-Stopped
- Lingual Arches
- Reverse Curve

TOP SELLER!



G4™ NICKEL TITANIUM

Available in:

- All Archforms
- Pre-Stopped
- Lingual Arches
- Pre-Torqued
- G4orce™ Triple Force
- Ultraesthetic™ Tooth-Colored
- Reverse Curve

TOP SELLER!



S304 VM Stainless Steel

Available in:

- All Archforms
- Ultraesthetic™ Tooth-Colored
- Lingual Arches



ULTRAESTHETIC™ TOOTH-COLORED

Available in:

- 5 Archforms
- G4™ NiTi
- Stainless Steel
- Reverse Curve
- Pre-Stopped



BT3™ BETA TITANIUM Titanium Molybdenum Alloy*

Available in:

- 5 Archforms
- T-Loop
- Lingual Arches



Multi-Strand Stainless Steel

Available in:

- 2 Archforms
- Four Strand Varieties:
3-Strand
6-Strand
7-Strand
8-Strand



REVERSE CURVE NICKEL TITANIUM

Available in:

- RC 1 & 3
- Europa™ II
- Pre-Stopped
- Pre-Torqued
- Thermal Copper
- Ultraesthetic™ Tooth-Colored



XR1™ HEAT-TREATED STAINLESS STEEL

Available in:

- All Archforms
- Brass Ball-Post Posted Arches



LOOPED STAINLESS STEEL

Available in:

- Trueform™
- T-Loop
- Keyhole Loop



POSTED STAINLESS STEEL

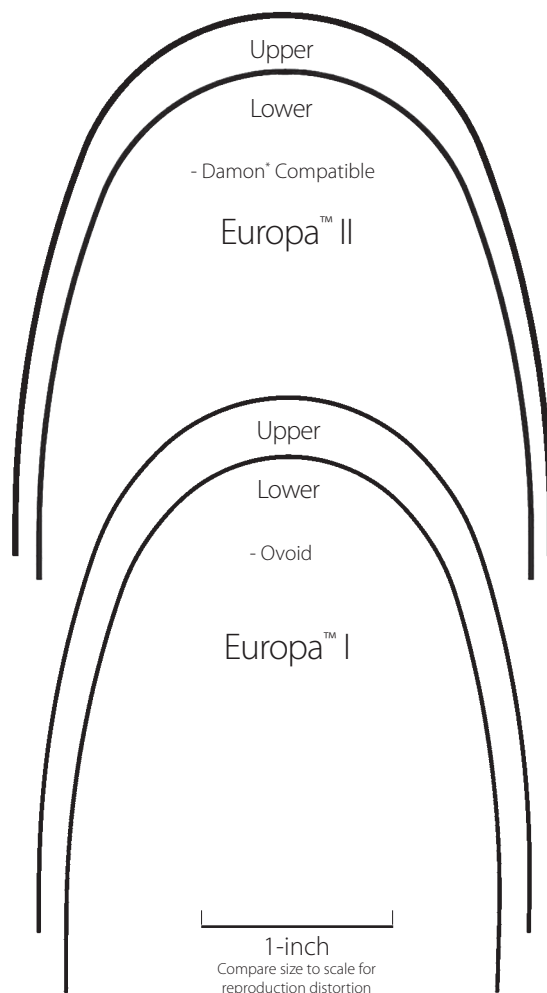
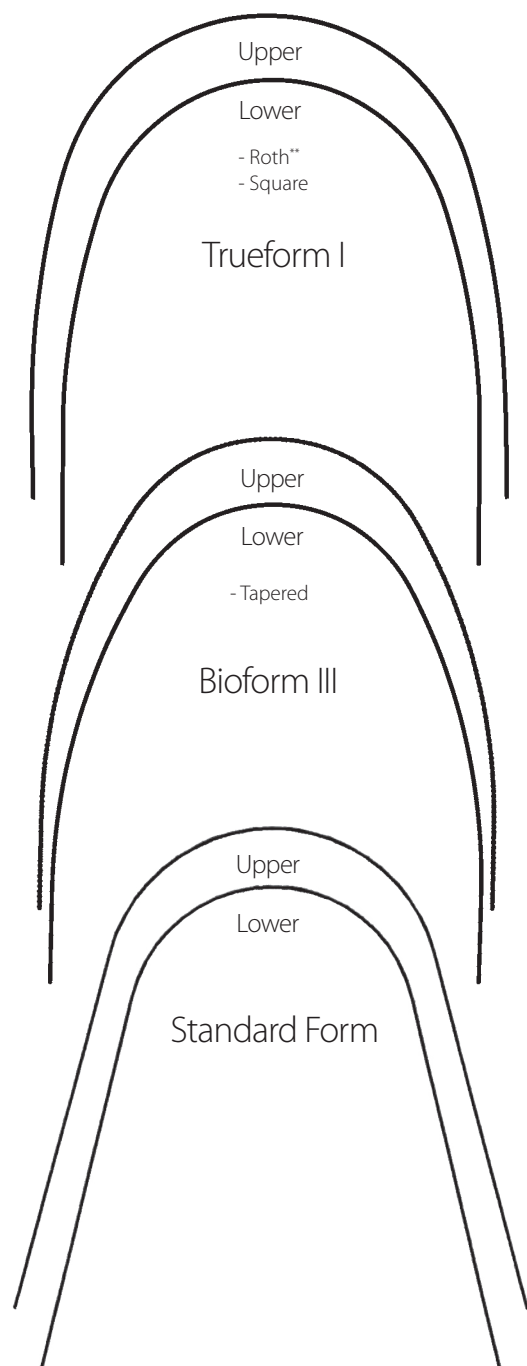
Available in:

- 4 Archforms
- Heat-Treated w/Brass Ball-Post
- Straight Brass Post

**Archwire
Manufacturing Excellence
for Over 40 Years!**



Our most popular archforms (Shown actual size)



33 ARCHFORM OPTIONS!

See our complete variety of shapes and alloys in our catalog online at: [GHOrthodontics.com](https://www.GHOrthodontics.com)

Permanent, electro-etched midline ID

- Three-etch lines for UPPER
- One-etch line for LOWER***



*G&H Orthodontics is in no way affiliated with or endorsed by Ormco Corporation or Dr. Dwight Damon.

**G&H prescriptions are not implied to be an exact version of any other system, nor do we claim any endorsement by the doctor.

***Australian wire and tooth-colored wires are ink-midline marked only.

STEP 4

Scientific Quality Testing & Final Inspection

Quality control is critical to precision manufacturing.

Features

- Continuous, meticulous testing of each lot
- 14 separate quality tests
- 28-point, 100% final inspection
- All wires must successfully pass all testing prior to packaging

Benefits

- Guaranteed performance characteristics
- 99.9% practitioner satisfaction* for all G&H wires



Waterbath force value and resiliency testing mimics intraoral environment.



3-point bend testing.



G&H V.P. of Operations, Brandon – All archwires are manufactured in the U.S.A. with the most stringent quality monitoring.



G&H employee, Laura – All archwires are evaluated for consistency of shape.



The diameter of all wires is tested for consistency of size.



Quality management system -
ISO 13485:2003 & EN ISO 13485:2012

*Based on orders shipped free of complaints/concerns



Solo-Pack™ autoclavable packaging.

STEP 5

Unique Packaging

Easily identifiable, secure packaging.

Features

- Easily identifiable color coding & labeling
- Lot traceability
- Autoclavable Solo-Pack™ wire packaging available

Benefits

- Easy to use
- Hygienic/sterilizable

G&H Solo-Pack™ autoclavable packaging

G&H is at the forefront in the industry in providing autoclavable, individual archwire packaging consistent with the highest standards of hygiene.



99.9% Practitioner Satisfaction* for All G&H® Manufactured Wires

You can be sure...

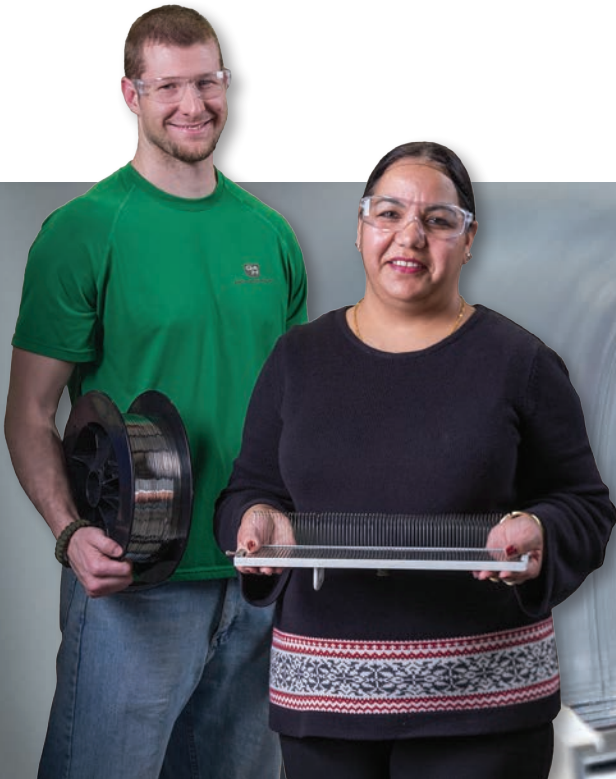
only wire that meets our rigorous quality control standards is packaged and delivered. Our wire packages are easily distinguishable, readily accessible, and provide secure wire containment. All of our wire packages provide lot traceability so that precise manufacturing information is available.

*Based on orders shipped free of complaints/concerns



ORTHODONTICS®

Quality Manufacturing. Exceptional Service.



Our Mission –

“To provide our customers a great experience achieved through quality manufacturing and exceptional service.”

Request a FREE SAMPLE!

G&H employees, Charles & Gurinderjit – All G&H employees take pride in knowing their contributions make G&H archwires the world's best.



BRACKETS



BANDS



TUBES



WIRES



SPRINGS



ELASTOMERICS

Precision engineered and manufactured in the **U.S.A.**